

2024 IMPACT REPORT

IT COSTS MORE TO DO NOTHING

SO WE CHANGED THAT



IT COSTS MORE TO DO NOTHING.

What it **costs society** when we do nothing about **houselessness, substance use, and family separation**

\$191,622
per family per year

Direct services to one **unhoused** adult
\$83,000 ⁽¹⁾

Cost of **untreated substance use** disorder for one adult
\$43,200 ⁽²⁾

Foster care costs for two children
\$65,422 ⁽³⁾

So we changed that!

What it **costs Amethyst Place** to serve the average family of three

\$40,913
per family per year



Estimated **savings to society** as a result of Amethyst Place

\$150,709
per family per year



Amethyst Place's **NOBLE CAUSE**

At Amethyst Place, we inspire transformational healing and empower generations of women and children to achieve recovery, reunification, and resilience.

For 25 years, we have been a pioneer in two-generational transformation—not just in Kansas City, but nationally. We have seen firsthand that recovery is a family journey and transformation takes time. That is why Amethyst Place is a long-term supportive housing program designed to reunify families and end generational cycles of poverty, substance use, and trauma.

Since 2000, we have served over 400 families, including 767 children. Annually, we've touched the lives of over 150 women and children through three core programs. Our annual impact will soon double through our housing expansion project at 2750 Tracy.



SUPPORTIVE HOUSING

Helps families stabilize and reunify through 37 private, fully furnished apartments and access to basic needs. No maximum length of stay. In 2025, we will open our Tracy Campus, adding an additional 32 units. Across 69 total units of housing, we will serve over 300 women and children annually.

FAMILY EMPOWERMENT

Helps families overcome generational poverty and lead healthy lives through financial, education, career, and wellness support. Our new Youth Empowerment Program (YEP!) brings this support to AP kids through individual coaching, mentoring, tutoring, and group programming.

THERAPEUTIC SERVICES

Helps women and children heal from past trauma, stabilize mental health, improve parenting skills, and build resilience. Services are provided on campus in individual, family, and group formats by our therapy staff. We also offer social-emotional yoga classes for children and families.



ABOUT OUR FAMILIES

2024
BY THE NUMBERS

205
women and children served

50
families lived at Amethyst Place

110
residents were children

43%
of residents were Non-White (up from 29% in 2020)

45
prior residents (women and children) still engaged with AP services

WHEN THEY MOVED IN

In 2024, the families who moved in faced substantial barriers to meeting their basic needs, let alone achieving a fulfilling and successful life. The average family was unhoused; experienced domestic violence; lacked transportation; had significant debt due to unpaid utility bills, evictions, and student loans; and had prior legal system involvement, creating barriers to employment. In addition to managing early recovery, moms also had unmanaged mental health issues. Children were likely separated from their mothers in foster care.

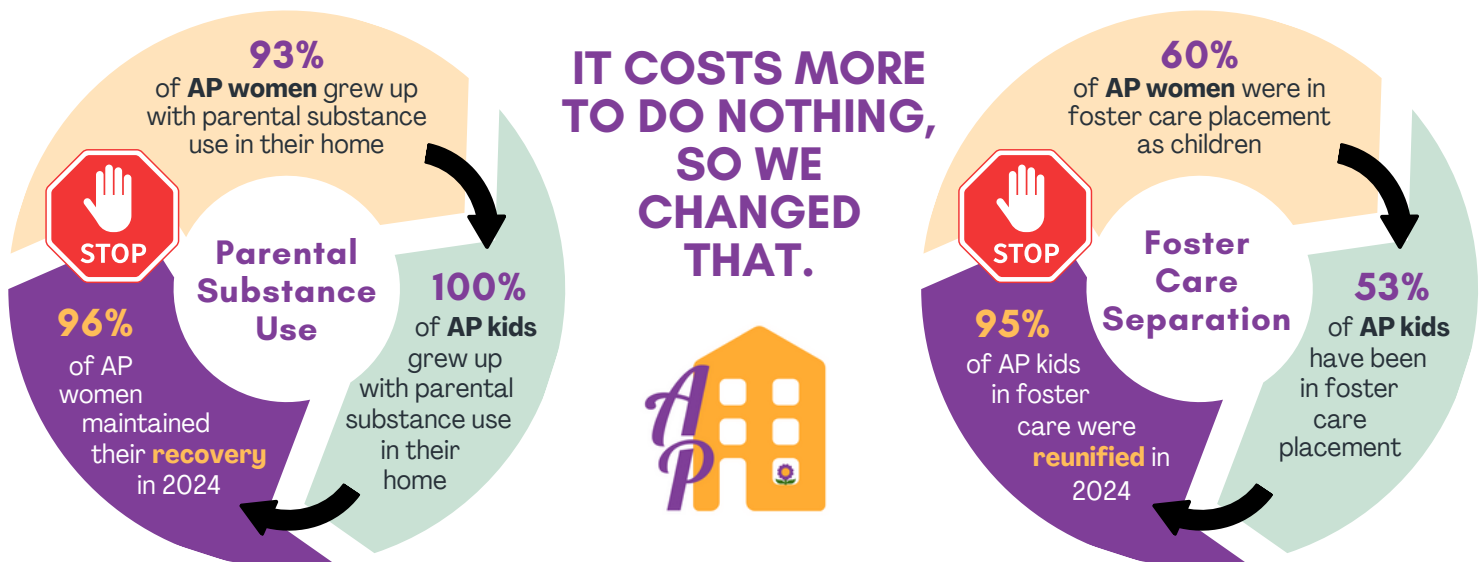
FACING GENERATIONAL CYCLES

Poverty, substance use, and trauma are often products of generational struggle. Among moms, most (60%) had experienced foster care or other out-of-home placement as a child, over half (67%) lived on their own before age 18, and most (93%) had a family history of substance use disorder.

Their childhood experiences underscore the generational cycles our program seeks to break. Similar to their mothers, the children who come to Amethyst Place have experienced significant childhood trauma. Prior to reuniting at Amethyst Place, 100% of families were unhoused, the majority (53%) were impacted by foster care placement, and nearly half (43%) had experienced domestic violence.

BREAKING GENERATIONAL CURSES

New mothers entering Amethyst Place have many key determinants of poor future outcomes. These can be passed on to the next generation. Their children often have many of the same challenges, which could also be passed on to their children. However, thanks to their time at AP, families can break these cycles.



A Long-Term Model for LONG-TERM SOLUTIONS

Amethyst Place uses a two-generation model in all that we do. Through our family-centered approach, we recognize that substance use, poverty, and trauma impact moms AND kids. We also take a long-term approach, knowing firsthand that transformation takes time. We have no maximum length of stay, letting families determine when they are ready for their next step toward independence. Through expansion, our goal is to increase the average length of stay beyond the current average of two and a half years, providing time and support for further transformation.



FAMILY JOURNEY THROUGH AP

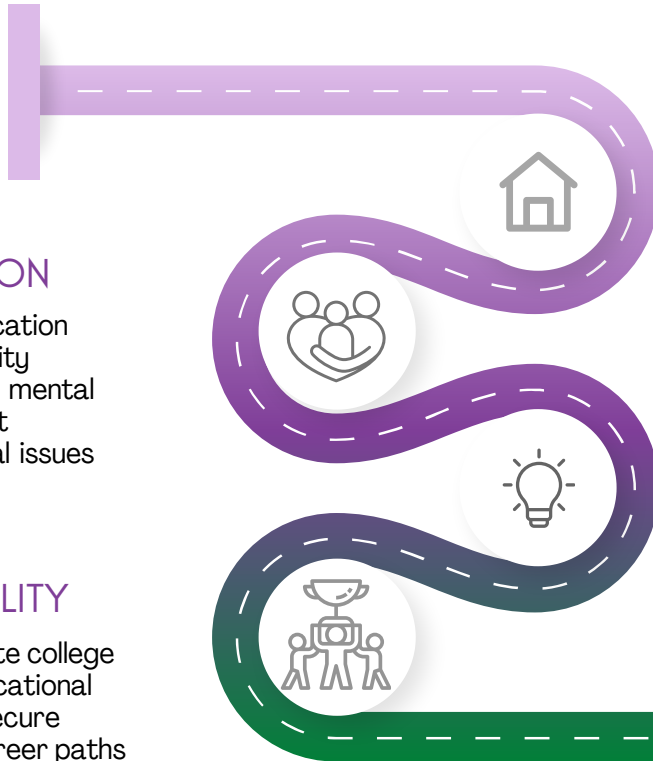


PHASE I: STABILIZATION

- Family reunification
- Housing stability
- Recovery and mental health support
- Debt and legal issues resolved

PHASE III: SUSTAINABILITY

- Moms complete college degrees or vocational training and secure meaningful career paths
- Families are equipped for continued success after Amethyst Place



AP WAITLIST

- Families are referred by one of 19 community partners
- Currently 90+ families wait 12 months to move in
- All unhoused with most children separated in foster care

PHASE II: EMPOWERMENT

- Investing in career and education while maintaining stability
- Children thrive with positive childhood experiences

COMMUNITY IMPACT

Thriving families living in the community with financial security, sustained recovery, and bright futures



AP
WAITLIST



PHASE I:
STABILIZATION



PHASE II:
EMPOWERMENT



PHASE III:
SUSTAINABILITY



COMMUNITY
IMPACT

WAITING FOR A HOME TO HEAL

Kansas City is experiencing an affordable housing crisis, something the families on our waitlist know all too well. The city lacks an estimated 64,000 units to meet the affordable housing demand. This is reflected in the increased demand for Amethyst Place services. Our waitlist averages 90 families waiting over a year to move in. The longer that families wait to enter housing in our program, the longer that mothers and children are separated by the child welfare system. Often, all it takes is safe housing to help a family reunify.

During 2024, Amethyst Place had **106** total families on our waitlist. Families started their care at one of our 10 referral agency partners. From there, they applied and were placed on our waitlist until a vacancy becomes available. Since 2024, we have added **9** new referral partners: Healing House, Kansas City Indian Center, Mattie Rhodes Center, Newhouse, Ozark Recovery Housing, Recovery Village, REHOPE, Rose Brooks Center, and The Village Initiative.

Referral Partner Agency	Referrals in 2024
Children’s Mercy TIES	13
Comprehensive Mental Health Services	16
Heartland Center for Behavioral Change	23
Imani House - Swope Health	3
Jackson County Family Treatment Court	8
Journey to New Life	2
Operation Breakthrough	5
ReDiscover	22
Sheffield Place	12
University Health Behavioral Health	2

BY THE NUMBERS

160

children on Amethyst Place
waitlist in 2024

1 year and 78 days

was the average family’s time on
the waitlist (and counting for most)



For Haley, the journey to Amethyst Place was filled with determination and hope. While in inpatient treatment at Rediscover, she set a goal to one day be part of the program. She knew the wait could be long, but she was willing to do the work to get there. She was shocked to receive a call, just days before Christmas, that an apartment had opened up for her.

“I was lying in bed with a migraine and wasn’t going to answer the phone,” Haley recalls. “I thought Ms. Gina was calling to say I was missing something for my application. Instead, she asked if I wanted to move in. I cried—I was so relieved and happy.”

Since moving into Amethyst Place, Haley has built a stable, healthy life for herself and her children. She now works two jobs, has legally purchased a car, regained her driver’s license, and established medical and dental care for her kids. Most importantly, she and her family have a safe, supportive place to grow. “I thank God every day,” she says.

HALEY’S STORY



AP
WAITLIST



PHASE I:
STABILIZATION



PHASE II:
EMPOWERMENT



PHASE III:
SUSTAINABILITY



COMMUNITY
IMPACT

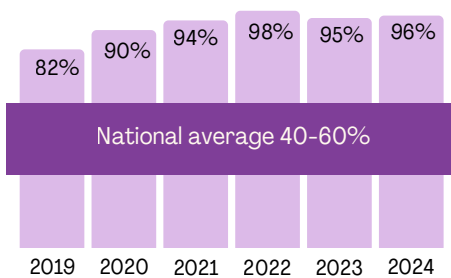
FINDING SAFETY AND STABILITY

After spending significant time on our waitlist, families who move into Amethyst Place become part of Phase I (Stabilization) programming. During this phase, families benefit from stability, a sense of security, and relationship restoration through reunification, a fully furnished private apartment, and mental health and recovery support. Programming allows residents to resolve circumstances that would inhibit their future success, including past evictions, outstanding legal issues, and lack of rental and employment history.

DEFYING NATIONAL AVERAGES

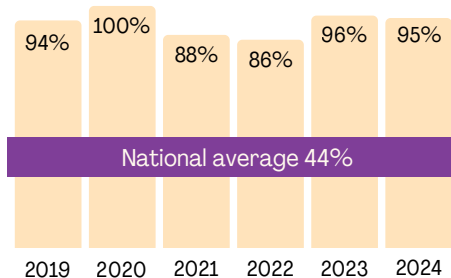
Amethyst Place’s holistic approach to stabilizing families has created a powerful impact over the last six years, especially when compared to national averages for recovery, family reunification, and housing stability.

Substance Use Recovery



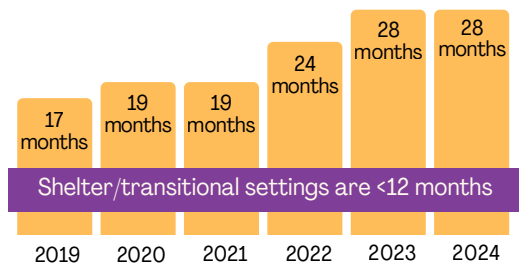
In comparison, the average recovery rate for the US population is between 40 to 60%.⁽⁵⁾ Our success is supported by the sense of connection on our campus, the lived expertise of our peer staff, and the multitude of recovery pathways supported.

Family Reunification



Nationally, only 44% of families reunify following mom's substance use treatment.⁽⁶⁾ Often times, this is due to a lack of safe housing options, court advocacy from service providers, and wraparound services that support the reunification process. Amethyst Place provides all of these services.

Housing Stability



Most recovery and transitional housing programs have a time-limited length of stay ranging from 30 days to 1 year. Our model has no time limits, allowing families the opportunity to individualize their journeys and move to independent housing when they are truly ready.

Before coming to Amethyst Place, Cori’s life was filled with instability. She was unhoused, struggling with substance use, and separated from her daughter. Having grown up with parents in prison and without a positive mother figure, she longed for a different future for herself and her child. Now, she is experiencing all of the joys of motherhood—watching her daughter take her first steps and learning how to support her emotional growth.

“I got my daughter back. Amethyst Place has shown up and shown out at every court date. They have been there for everything.”

Being surrounded by a community of strong women has given Cori hope. She recently discovered a passion for photography and dreams of becoming an entrepreneur. “Being here and seeing women achieving their goals gives me hope and inspires me to keep going,” she shares. Now, Cori is not only building a future for herself but also ensuring that her daughter grows up with the love and support she never had.



CORI’S STORY



AP
WAITLIST



PHASE I:
STABILIZATION



PHASE II:
EMPOWERMENT



PHASE III:
SUSTAINABILITY



COMMUNITY
IMPACT

EMPOWERING THE WHOLE FAMILY

Next, families progress to Phase II (Empowerment). With more stability, families are able to pursue their education and career goals while maintaining their mental health and recovery stability. For many, this includes becoming a first-generation college student or completing vocational training, leading to a meaningful career pathway and improved financial wellbeing. During this time, children are able to thrive at home and in school, enjoying their newfound stability, making neighborhood friends, continuing therapy as needed, participating in Youth Empowerment Programming (YEP!), and cheering mom along on her inspirational journey.

John is a 15-year-old resident of Amethyst Place, where he has lived with his mom and brother since 2021. He has participated in the Youth Empowerment Program (YEP!) since its creation.

“I was never out and about in the AP community, but now I’m more active, and I’ve seen people grow and change—including myself.”

Through YEP, John says he has grown into a kinder and more respectful person, discovered his ability to make a difference, and become confident in his own impact. The program helped him shift his perspective and find purpose in giving back—especially through helping moms move and earning community service hours toward graduation. Looking ahead, he’s excited about future opportunities YEP might bring and hopes other young people at AP see it as a way to explore new interests and open doors. “It will help them get settled in and give them something to do that they like,” he says.



John meeting
Jason Kelce!

JOHN’S STORY

TURNING ADVERSITY INTO TRIUMPH

Through our long-term program, families are given the space and support to truly heal and disrupt generational cycles – especially trauma. Women who entered AP in 2024 collectively experienced significant childhood trauma (averaging 7 on a 0-10 scale for Adverse Childhood Events [ACEs], with a higher number indicating higher trauma). The majority of women scored higher than 83% of average adults. (7)

ACEs can impact child development and lead to life-long negative health impacts.(8) Additionally, maternal ACEs can even be passed on to children, increasing the likelihood of emotional disturbance and problem behaviors.(9)

Thankfully, ACEs are risk factors and not destiny: research also suggests that the development of protective and compensatory experiences (PACEs) can buffer the effects of adverse experiences and promote healthy development.(10) We promote PACEs and help children build resilience through our Family Empowerment Program and Therapeutic Services, which promote healing for the entire family. We also cultivate a family-centered community of healing through family events, mentoring, and parenting education.

Promoting PACEs:

Total Hours of
Support in 2024

Adult, Child, and
Family Therapy

617 hours

Social
Emotional
Yoga

176 hours

Youth Programming and
Individual Coaching

2,299 hours

Individual
Coaching
for Moms

584 hours



AP
WAITLIST



PHASE I:
STABILIZATION



PHASE II:
EMPOWERMENT



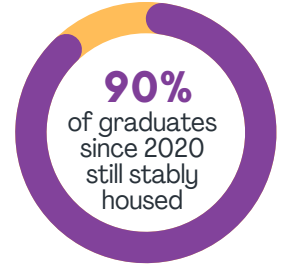
PHASE III:
SUSTAINABILITY



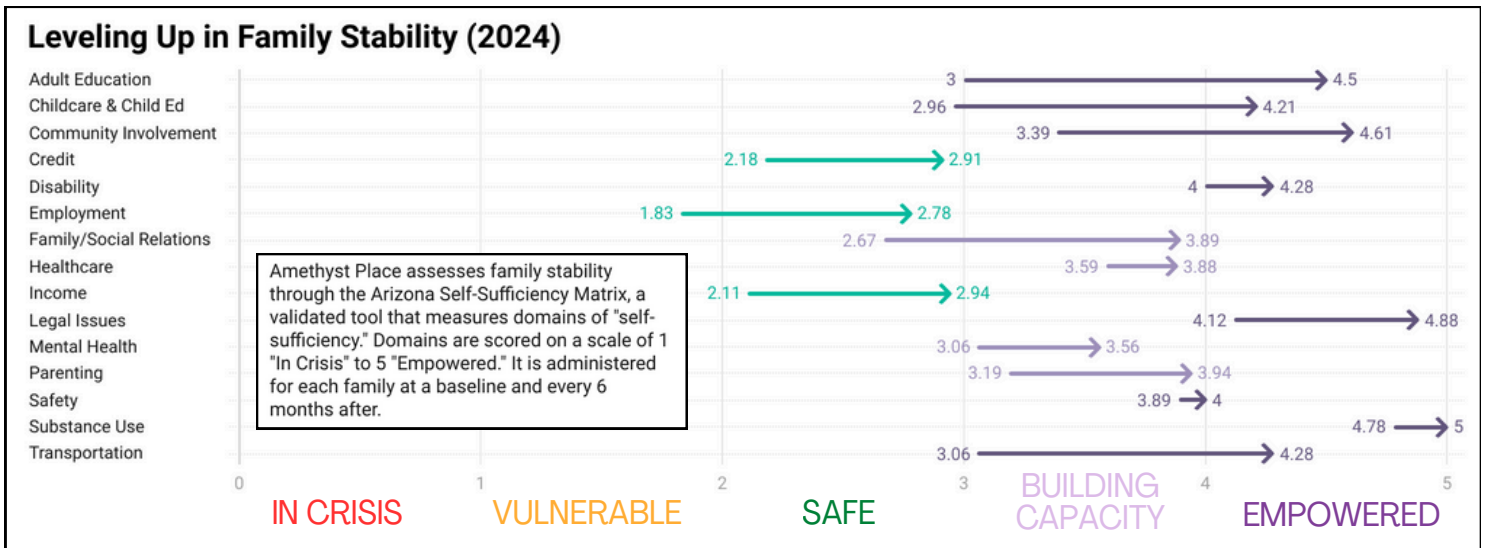
COMMUNITY
IMPACT

SUSTAINING SUCCESS AFTER AMETHYST PLACE

Historically, Phase II (Empowerment) is where our program ends and residents move out into the community after about two years. But the journey no longer stops here. Through our Tracy Campus, we have added Phase III (Sustainability). This allows residents to continue in affordable housing with more independence in a family-friendly townhome, while having a built-in support system to easily engage when needed. We hope to see even higher rates of degree completion, upward mobility in career paths, and better long-term outcomes.



As it stands, families already achieve a high level of stability upon graduation. The chart below demonstrates the holistic family stability improvements that families achieve in our program. By the time they graduate, they score in the highest possible range (Empowered) in nearly half of the 18 domains.



When Brittany came to Amethyst Place, she was on the verge of losing everything—houseless, struggling with substance use, and at risk of losing her children permanently. She had spent months at Hope House to escape an abusive relationship, determined not to leave until she had a stable place to rebuild her life. "I finally get to LIVE," she remembers thinking when she was accepted into AP. With AP's support, she has completed her HiSET, earned her CNA certification, and secured her first job. She also graduated from drug court and multiple treatment programs and reunited with her children.

Now, with seven years of sobriety, Brittany is thriving. She works as a CNA, and her oldest daughter is preparing to graduate high school, buy her first car, and enroll in college. Her younger children are active in sports, and she cherishes every moment of being present in their lives.

"They gave me a life! They gave me love! Just because I'm leaving doesn't mean the support is gone. The best part about AP is the connections you build for a lifetime. Once a sister, always a sister—AP will always be there."



BRITTANY'S STORY



AP
WAITLIST



PHASE I:
STABILIZATION



PHASE II:
EMPOWERMENT



PHASE III:
SUSTAINABILITY



COMMUNITY
IMPACT

GROWING OUR IMPACT

Since our inception in May 2000, the demand for Amethyst Place’s unique services has always outpaced our capacity. In 2020, we began working toward expanding our physical space and community impact. A year later, we purchased 1.28 acres of vacant land at 28th and Tracy, a block east of our Troost Campus, thanks to the generous support of private donors. On May 19, 2023, we broke ground on the \$16.5 million development and embarked on the first steps of a transformative journey to nearly double our capacity and expand our reach.

Fast forward to April 8, 2025, we proudly opened our doors and began moving in new families to the Tracy Campus. The development includes 25 apartments, 7 townhomes, outdoor community and recreation space, a wellness room, a household pantry, adult and youth programming spaces, and offices for on-site services. Through this expansion, we will serve an estimated 300 women and children annually across both campuses.

BY THE NUMBERS

25
apartments

7
townhomes

86%
increased capacity



SIGNATURE SPACES

Here are the unique spaces that make the Tracy Campus feel like home and the generous supporters who made them possible. Special thanks goes to Tamara Day Design for their interior design of the common spaces and bedrooms!



These spaces were all supported by **The WellSky Foundation** and their generous employees who donated a total of \$160,000 during their employee giving campaign! The company then matched \$40,000, for a grand total of \$200,000. In addition, WellSky employees donated their time and talent to help assemble bedroom furniture.



Community Room:
Presented by the Shields
& Reid Families



Playground:
Presented by The David and Tracy
Lockton Family Foundation



Youth Empowerment:
Presented by The Dehaemers
Family Charitable Trust



Outdoor Gathering Space:
Presented by Rolling Hills Church

Our **capital campaign raised \$15,090,298** to support construction costs of the \$17,000,000 project. The remainder was funded by a construction loan from Legacy Bank & Trust. We are in the process of fundraising to fill this gap and pay off the construction loan to avoid permanent debt. We raised over \$500,000 to furnish spaces in the building (pictured above), designing with dignity to create a space that promotes healing.

#GrowAP Campaign Supporters

- City of Kansas City, MO
- Sunderland Foundation
- Hall Family Foundation
- State of MO
- Yield Giving (MacKenzie Scott)
- William T. Kemper Foundation
- Bloch Family Foundation
- Shepard McCaskill Foundation
- Sherman Family Foundation
- Dehaemers Family Charitable Trust
- Baum Family Foundation
- UMB Bank
- The WellSky Foundation
- David and Tracy Lockton Family Foundation
- Pfriem Family Fund
- Mullinix Family Foundation
- Ann & Gary Dickinson Family Charitable Fund
- The McDonnell Foundation
- Rolling Hills Church
- Shields and Reid Families
- Ronald D. Deffenbaugh Foundation
- Hallmark
- Country Club Christian Church
- Children's Mercy Hospital
- T-Mobile
- Francis Family Foundation
- Travois
- Legacy Bank & Trust

CUTTING THE RIBBON

On June 27, 2025, we cut the ribbon on our brand-new 32-unit campus, a \$17M investment in affordable housing and recovery support for families overcoming intergenerational trauma, substance use, and poverty.

The event marked our 25th anniversary and reminded us what's possible when community comes together—with love, hope, and celebration.

Nearly 300 supporters joined us—including Mayor Quinton Lucas; Blaine Proctor, KCMO Director of Housing & Community Development; Tamara Day and Denise Cadenas, Tamara Day Design; Brett Fuller, Executive Director of The WellSky Foundation; Mayor Pro Tem Ryana Parks-Shaw; and HUD Regional Administrator Joseph Mitchell.



**Watch
the Recap!**



THE SUPPORTERS WHO MAKE TRANSFORMATION POSSIBLE

American Century Investments Dollars for Donors Fund
 Balocca-Clemens Family Foundation
 Blessings Abound
 Blue Cross Blue Shield of Kansas City
 Blue Cross Blue Shield of Kansas
 BlueScope Foundation
 Charles and Angela Sunderland Fund
 Children's Mercy Hospital
 Children's Services Fund of Jackson County
 Church of the Resurrection Recovery Ministry
 City of Kansas City, MO
 Community Action Agency of Greater Kansas City
 Country Club Christian Church
 Curry Family Foundation
 Daniel G. and Wanda K. O'Dell Family Foundation
 Denene Brox Charitable Fund
 Everying Inc.
 Ewing Marion Kauffman Foundation
 First Presbyterian Church of Lee's Summit
 Frank and Margaret McGee Fund
 Garmin International
 GR's Foundation
 Greater Kansas City Community Foundation
 Hallmark Corporate Foundation
 Housing Authority of Kansas City, MO
 Hulston Family Foundation
 Hunt Family Foundation
 Ina Calkins Trust
 Infinity Chiropractic and Acupuncture
 Jackson County Housing Resources Commission
 Jackson County COMBAT
 Jacob L. & Ella C. Loose Foundation
 Jewish Community Foundation of Greater Kansas City
 Judge Cleveland F. Moulton Christmas Poor Fund
 Kansas City Athenaeum
 Kansas City Junior Board
 The Kemper Family Foundations at UMB
 Ladies Ancient Order of Hibernians
 Lockton Companies
 Marion and Henry Bloch Family Foundation

Megan C. Toal & Associates Inc.
 Melissa Palan Goldenberg Charitable Giving Fund
 Missouri Department of Mental Health
 Missouri Department of Social Services
 Mullinix Family Foundation
 Nicholson Meyer Capital Management
 Nordstrom Cares
 Oppenstein Brothers Foundation
 PayPal Giving Fund
 Pfriem Family Fund
 Precision Printing
 Rau Construction
 RAYGUN
 Recovering Women Riders Chapter 7
 Robert and Barbara Palan Restricted Fund 4 of the Jewish Community Foundation of Greater Kansas City
 Robertson Family Foundation
 Rolling Hills Presbyterian Church
 RW Farmer Construction Company
 Sarli Family Foundation
 Serenity Memorial Chapel LLC
 Shepard McCaskill Foundation
 SkillBuilders Fund
 Stanley Family Charitable Fund
 Tella Naluri Foundation
 The Dehaemers Family Charitable Trust
 The Kirk of Kansas City
 The Little Gym of Kansas City North-Parkville, MO
 The Mariner Foundation Fund, a Donor-Advised Fund of the Signatry
 The Research Foundation
 Thomas & Sally Wood Family Foundation, UMB Bank
 TISBEST Philanthropy
 Travois
 UMB Bank
 United Way of Greater Kansas City
 Victor E. Speas Foundation
 Village Presbyterian Church
 WellSky Foundation
 Will to Succeed Foundation
 Women's Sports Foundation
 William T. Kemper II Charitable Trust
 William G. Nichols II, a Donor-Advised Fund
 Zimmerman Family Fund

LEGACY HONOR ROLL

The Legacy Honor Roll is a special group of donors who have chosen to leave a lasting mark on Amethyst Place through a legacy gift.



“Amethyst Place is changing the lives of women and their children in such an amazing way! We want to help... both currently and through a legacy gift as beneficiary of our IRA account. And we want to encourage all of Amethyst Place’s supporters to take ten minutes, go online, and simply add Amethyst Place as a beneficiary of their own retirement plan. It’s an easy, flexible, and meaningful way to share your blessings to help these terrific women and their families.”

- Philip and Anne Watson, our inaugural Legacy Honor Roll members

This list includes FY24 contributors (10/1/23 - 9/30/24). Individual donors were not listed to maintain privacy. The selfless investment by countless individuals fuels the Noble Cause of Amethyst Place and creates brighter futures for hundreds of Kansas City families.

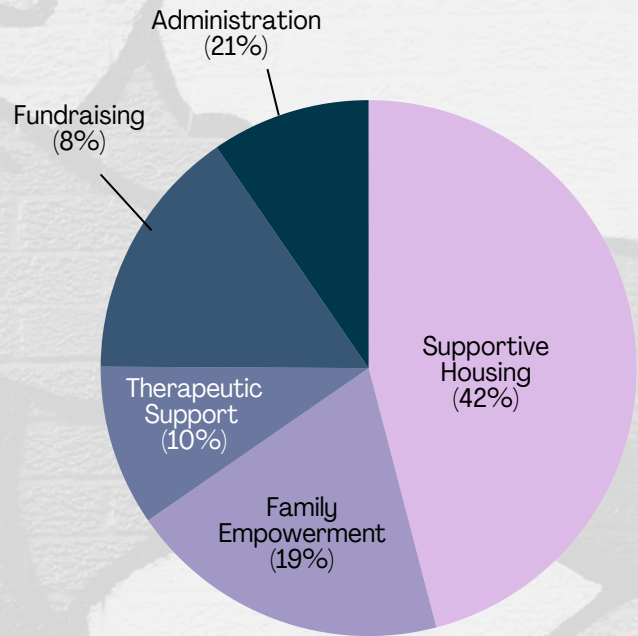
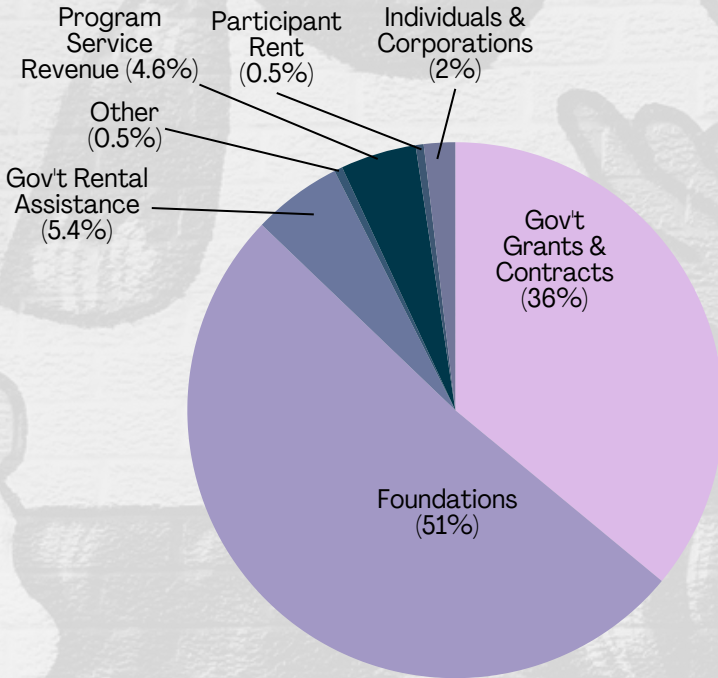


FY24 FINANCIAL OVERVIEW

In FY24 (10/1/23 to 9/30/24), we focused on sustaining organizational operations while completing construction on our new campus, which is reflected in our revenues. Further financial details are available on our website, including audited financial statements and 990 forms (<https://amethystplace.org/finances/>).

REVENUES = \$12,666,665

EXPENSES = \$2,795,767



HONORING THE ACHIEVEMENTS OF AP WOMEN & KIDS

Each September during National Recovery Month, we take time to celebrate our community and raise awareness to shatter stigma. Despite insurmountable odds, Amethyst Place families achieve incredible milestones like reuniting with their families, earning certifications and degrees, becoming homeowners, and much more! Let's take a look back at the accomplishments we celebrated at our 2024 Growing Generations Graduation.

BY THE NUMBERS: 2024 WOMEN AND TEEN ACHIEVEMENTS

9 vocational certifications earned	5 treatment programs completed
5 Amethyst Place graduates	4 families reunified
11 Youth in leadership roles	1 associate degrees earned
2 Joined a Trade Union	1 bachelor degree earned
1 first-time homeowner	8 certified as recovery professional



Whitney, pictured here with her daughters Izzy and Sidney, won the inaugural Leadership Award. She was selected by her fellow residents for the leadership she demonstrated in the AP community.



Mary was honored for graduating Amethyst Place. This distinction honors the completion of an extensive list of milestones intended to upend generational cycles of poverty, substance use, and trauma.

OUR LEADERSHIP

BOARD OF DIRECTORS

- **Brooke Runnion**, Board Chair, Lockton Companies
- **Jaimie Davis**, Board Vice-Chair, Alumni
- **Vladimir Sainte'**, Board Secretary, University Health Behavioral Health
- **Sara Beth Burton**, Treasurer, Chair of Finance Committee, Hallmark
- **Jasmin Avakyants**, Creative Consultations
- **Liz Bean**, REVILO: A Liz A. Bean Salon/Alumni
- **Randy Bennett**, Nice Guy Motors
- **Brian Block**, Freedom 3 Capital
- **Yvonne Brewington**, Research Medical Center
- **Kathryn Evans**, Rooted Strategy
- **Dr. Angela Gist-Mackey**, University of Kansas
- **Erica Handley**, Operation Breakthrough/Program Council
- **Anthony Johnson**, Industrial Accessories Company
- **Michele Kemp**, Community Volunteer
- **Alexandria Murnan**, Travois
- **Emily Parish**, University Health Foundation
- **Rev. Catherine Stark-Corn**, Urban Produce Push (UPP)
- **Liz Tobin**, BlueScope
- **Barbara Anne Washington**, MO State Senator, District 9
- **Brittani Williams**, Jackson County Family Treatment Court/Program Council

STAFF

- **Eboney Allmon**, Housing Navigator
- **Ashley Brooks**, Senior Youth Empowerment Coach
- **Randi Cagle**, HR Specialist
- **Lauren Clifton-Thompson**, Director of Development
- **Olivia Deeken**, Clinical Therapist
- **Jamila Edwards**, Director of Clinical Services
- **Lauren Euritt**, Financial Accountant
- **LaTonya Evans**, Supportive Housing Assistant
- **Mollee Flores**, Wellness Empowerment Coach
- **Regina Green**, Supportive Housing Manager
- **Erin Hestand**, Adult Empowerment Manager
- **Jimmy Holmes**, Data Analytics & Grants Manager
- **Christina Hubbard**, Career Empowerment Coach
- **Latrese Kabuya**, Child & Family Therapist
- **Sarah Knopf-Amelung**, Director of Strategy & Growth
- **Jerry McNeal**, Youth Empowerment Manager
- **Ashley Rudd**, Philanthropy & Communications Manager
- **Steven Tucker**, Director of Housing
- **Katie Van Hove**, Fractional CFO
- **Tonille "Starr" Williams**, Housing Resources & Volunteer Coordinator
- **Linnie Wilson**, Youth Empowerment Coach
- **Starla Wulf Brennan**, Executive Director

PROGRAM COUNCIL (REFERRAL PARTNERS)

- **Children's Mercy TIES Program**
- **Comprehensive Mental Health Services**
- **Healing House**
- **Heartland Center for Behavioral Change**
- **Imani House – Swope Health**
- **Jackson County Family Treatment Court**
- **Journey to New Life**
- **Kansas City Indian Center**
- **Mattie Rhodes Center**
- **Newhouse**
- **Operation Breakthrough**
- **Ozark Recovery Housing**
- **Recovery Village**
- **ReDiscover**
- **REHOPE**
- **Rose Brooks Center**
- **Sheffield Place**
- **University Health Behavioral Health**
- **The Village Initiative**

OUR VOICE RESIDENTS' COUNCIL

Aime, Andrea, Ang, Angela, Brittani, Dalisha, Esbeydi, Lucia, Tabatha, Tara, Samantha, and Whitney

YOUTH ADVISORY COUNCIL

Aubrey, Autumn, Destiney, John, Johnae, Kyla, LaMya, Maribella, and Zoey

CITATION REFERENCES

1. Nielsen et al. (2019). *The unseen costs of foster care: A social return on investment study*. Retrieved from <http://www.thetcj.org/wp-content/uploads/2019/10/Alia-unseen-costs-of-FC.pdf>
2. Health Policy Institute, Georgetown University. (2022). *Substance abuse: Facing the costs*. Retrieved from <https://hpi.georgetown.edu/abuse/#:~:text=Substance>
3. Cohen, E. (2022). "The effect of housing first programs on future homelessness and socioeconomic outcomes." *KC Fed Research Working Papers*, 22-03. Retrieved from <http://doi.org/10.18651/RWP2022-03>
4. MARC. (2023). *Assessing the Affordable Housing Gap*. Retrieved from <https://storymaps.arcgis.com/stories/4e1137ba32fc4add805280517f8e174c>
5. National Institute on Drug Abuse (NIDA). (2020). *Drugs, brains, and behavior: The science of addiction, treatment and recovery*. Retrieved from <https://nida.nih.gov/publications/drugs-brains-behavior-science-addiction/treatment-recovery>
6. Grella, C. E., Needell, B., Shi, Y., & Hser, Y. (2009). Do drug treatment services predict reunification outcomes of mothers and their children in child welfare? *Journal of Substance Abuse Treatment*, 36(3), 278-293. Retrieved from <https://www.ncbi.nlm.nih.gov/pmc/articles/PMC2848488/>
7. CDC. (2019). Adverse childhood events. CDC Vital signs, November 2019. Retrieved from <https://www.cdc.gov/vitalsigns/aces/index.html>
8. Felitti et al. (1998). Relationship of childhood abuse and household dysfunction to many of the leading causes of death in adults: The Adverse Childhood Experiences (ACE) study. *American Journal of Preventive Medicine*, 14, 245-258.
9. Cooke et al. (2021). Maternal adverse childhood experiences and child behavior problems: A systematic review. *Pediatrics*, 148(3). Retrieved from <https://doi.org/10.1542/peds.2020-044131>
10. Hays-Grudo et al. (2020). PACEs for children: Overcoming Adversity and Building Resilience. OSU Extension. Retrieved from <https://extension.okstate.edu/fact-sheets/paces-for-children-overcoming-adversity-and-building-resilience.html>

*Data visualizations created with Datawrapper.

Companies that Care

BUSINESS PARTNERSHIP PROGRAM



GOOD FOR COMMUNITY



GOOD FOR BUSINESS

LET'S PARTNER TO SUPPORT THE COMMUNITY AND YOUR BUSINESS!

We believe in the power of partnership! As we turn our focus to expanding our campus and services, we have pivoted from the traditional annual gala and sponsorship model. We believe in collaboration and long-term strategies to foster deeper relationships and strengthen our collective impact. Now more than ever, your customers and employees care about corporate social responsibility too. In addition to driving consumer decisions, 83% of millennial employees are more loyal to a company that helps them contribute to social and environmental issues (Source: [Forbes](#)).

Through volunteerism, donation drives, awareness campaigns, speaking engagements, financial contributions and more, you can make a deep impact while receiving partner benefits, media and brand recognition among other beneficial opportunities.

Let's work together to find the right social impact strategy for your business!

GIVING BACK IS GOOD FOR BUSINESS

Research shows that a company's charitable giving affects three-quarters (73%) of Americans' purchase decisions.



Source: [Mintel Cause Marketing US Report](#)

PARTNER SPOTLIGHT



WellSky Foundation has been a proud Companies that Care partner since 2023, when they gave their first \$100,000 grant to Amethyst Place. In 2024, they hosted an Employee Giving Week that raised \$200,000 to furnish spaces in our new Tracy Campus. This included brand new furniture for all 75 bedrooms, plus furnishings for the new household pantry and Sister Space. WellSky teammates have also participated in numerous volunteer activities, including assembling the bedroom furniture they sponsored.

HOW DOES IT WORK?

Companies that Care is a completely customizable partnership. Our goal is to curate a social impact strategy that benefits your business while supporting the Amethyst Place community. Check out potential ways that your business can benefit while giving back.

GOOD FOR BUSINESS



- Positive brand recognition and cross-promotion
- Access new markets
- Recruit and retain socially conscious employees
- Increase brand loyalty
- Enhance your social footprint and achieve philanthropic goals



GOOD FOR COMMUNITY

- Financial contributions
- Volunteerism
- Donation drives
- Employee awareness-building
- Customer awareness-building
- Employ AP families
- Participate in AP events
- Increase community engagement

SCHEDULE A STRATEGY SESSION

Lauren Clifton-Thompson, Director of Development
P: 816-343-4037 E: lauren@amethystplace.org

connect with us

Office
2750 Tracy Avenue
Kansas City, MO 64109

Phone
816-231-8782

To donate
Scan the QR code
or text **GROWAP**
to **44-321**



www.amethystplace.org

Please note: our main office has moved to the new Tracy Campus!



Amethyst Place
where families come home to heal