

2023

IMPACT
REPORT



Home Sweet Healing





Amethyst Place's

NOBLE CAUSE

At Amethyst Place, we inspire transformational healing and empower generations of women and children to achieve recovery, reunification, and resilience.

For over 23 years, we have been a pioneer in two-generational transformation—not just in Kansas City, but nationally. We have seen firsthand that recovery is a family journey and transformation takes time. That is why Amethyst Place is a long-term supportive housing program designed to reunify families and end generational cycles of poverty, substance use, and trauma.

Since 2000, we have served 384 families, including 742 children. Annually, we touch the lives of over 150 women and children through three core programs. Our annual impact will soon double through our housing expansion project at 2770 Tracy.



SUPPORTIVE HOUSING

Helps families stabilize and reunify through 37 private, fully furnished apartments and access to basic needs. No maximum length of stay. By the end of 2024, we will operate 70 units of housing, serving over 300 women and children annually.



FAMILY EMPOWERMENT

Helps families overcome generational poverty and lead healthy lives through financial, education, career, and wellness support. Our new Youth Empowerment Program (YEP!) brings this support to AP kids through individual coaching and group programming.



THERAPEUTIC SERVICES

Helps women and children heal from past trauma, stabilize mental health, improve parenting skills, and build resilience. Services are provided on campus in individual, family, and group formats by our therapy staff.



ABOUT OUR FAMILIES

BY THE NUMBERS

163

women and children served

69%

of residents were children

78%

of families lacked transportation

67%

of moms were buried in past debt accrued in poverty

78%

of moms spent time in foster care as children. And now, so have 78% of their children.

WHEN THEY MOVED IN

In 2023, the families who moved in faced substantial barriers to meeting their basic needs, let alone achieving a fulfilling and successful life. The average family was unhoused; experienced domestic violence; lacked transportation; had significant debt due to unpaid utility bills, evictions, and student loans; and had prior legal system involvement, creating barriers to employment. In addition to managing early recovery, moms also had unmanaged mental health issues. Children were likely separated from their mothers in foster care.

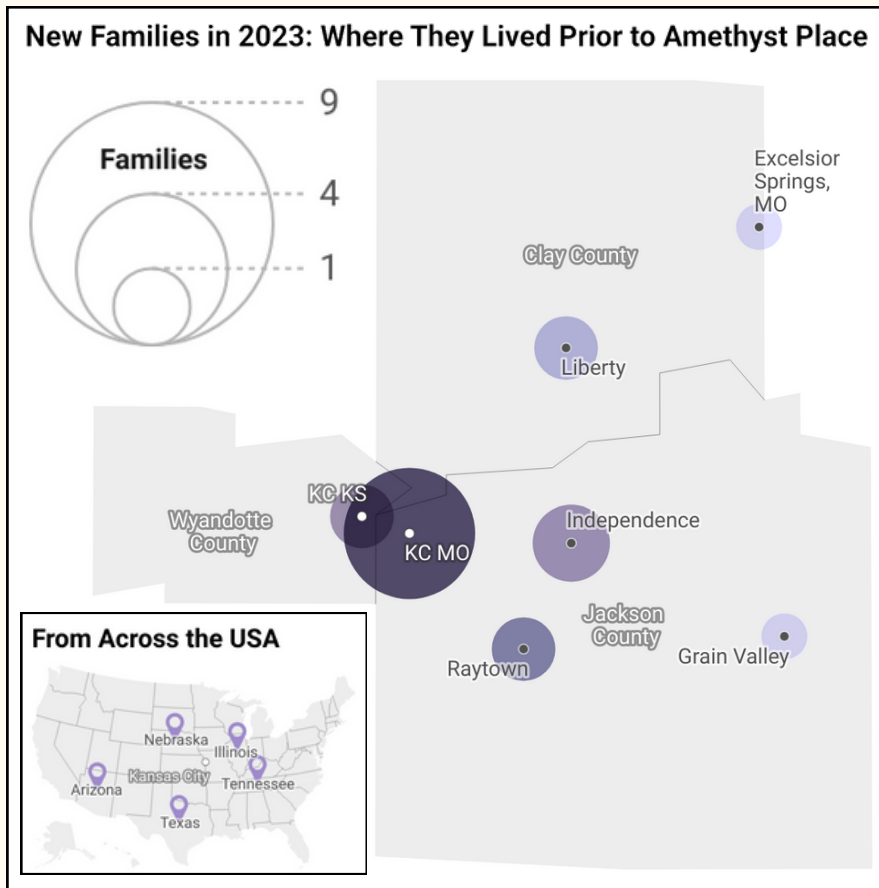
A HISTORY OF INSTABILITY AND FREQUENT MOVES

Due to the nature of housing instability, families lived in many locations in the region and across the country before finding a stable home at Amethyst Place. In addition to the psychological and social challenges of frequent moves as a child, this can also have a negative impact on a child's educational attainment.

GENERATIONAL CYCLES

Poverty, substance use, and trauma are often products of generational struggle. Among moms, most (78%) had experienced foster care or other out-of-home placement as a child, over half (56%) lived on their own before age 18, and all (100%) had a family history of substance use disorder.

Their childhood experiences underscore the generational cycles our program seeks to break. Similar to their mothers, the children who come to Amethyst Place have experienced significant childhood trauma. Prior to reuniting at Amethyst Place, 100% of families were unhoused, the majority (78%) were impacted by foster care placement, and over half (57%) had experienced domestic violence.

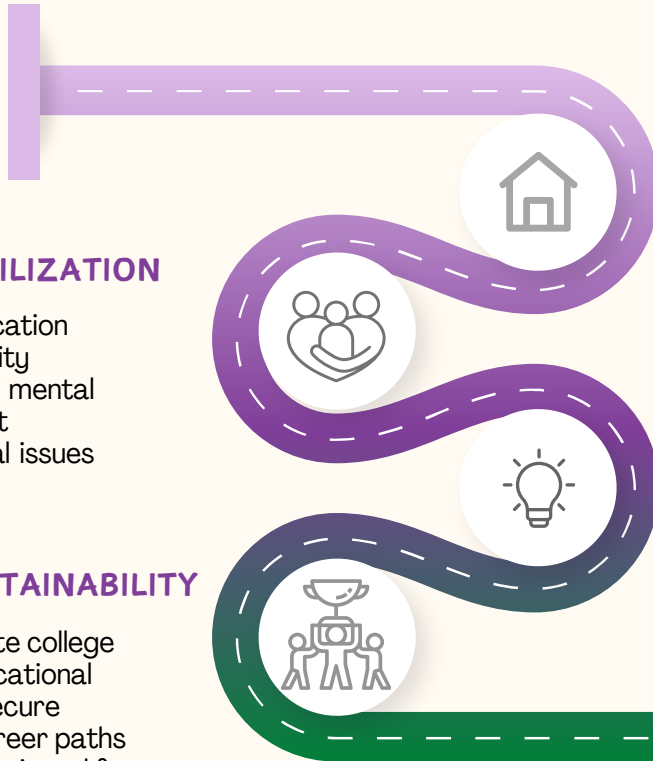


A Long-Term Model for LONG-TERM SOLUTIONS

Amethyst Place uses a two-generation model in all that we do. Through our family-centered approach, we recognize that substance use, poverty, and trauma impact moms AND kids. We also take a long-term approach, knowing firsthand that transformation takes time. We have no maximum length of stay, letting families determine when they are ready for their next step toward independence. Through expansion, our goal is to increase the average length of stay beyond the current average of two and a half years, providing time and support for further transformation.



FAMILY JOURNEY THROUGH AP



LEVEL I: STABILIZATION

- Family reunification
- Housing stability
- Recovery and mental health support
- Debt and legal issues resolved

LEVEL III: SUSTAINABILITY

- Moms complete college degrees or vocational training and secure meaningful career paths
- Families are equipped for continued success after Amethyst Place

AP WAITLIST

- Families are referred by one of 11 community partners
- Currently 50+ families wait 12 months to move in
- All unhoused with most children separated in foster care

LEVEL II: EMPOWERMENT

- Investing in career and education while maintaining stability
- Children thrive with positive childhood experiences

COMMUNITY IMPACT

Thriving families living in the community with financial security, sustained recovery, and bright futures



AP
WAITLIST



LEVEL I:
STABILIZATION



LEVEL II:
EMPOWERMENT



LEVEL III:
SUSTAINABILITY



COMMUNITY
IMPACT (SROI)

WAITING FOR A HOME TO HEAL

Kansas City is experiencing an affordable housing crisis, something the families on our waitlist know all too well. The city lacks an estimated 64,000 units to meet the affordable housing demand.⁽¹⁾ This is reflected in the increased demand for Amethyst Place services. Our waitlist averages 50 families waiting over a year to move in. The longer that families wait to enter housing in our program, the longer that mothers and children are separated by the child welfare system. Often, all it takes is safe housing to help a family reunify.

BY THE NUMBERS

115

children on Amethyst Place
waitlist in 2023

391 days

was the average time on the
waitlist (and counting for most)

Families on 2023 Amethyst Place Waitlist

During 2023, Amethyst Place had 72 total families on our waitlist. Families start their care at one of our 10 referral agency partners. From there they can be placed on our waitlist until a vacancy becomes available on campus. Since 2023, we have added Mattie Rhodes Center as an 11th referral partner and hope to expand this network further when our new campus opens.

Referring Partner Agency	Families Referred
Children's Mercy TIES	5
Comprehensive Mental Health Services	13
Heartland Center for Behavioral Change	16
Imani House	2
Jackson County Family Treatment Court	3
Journey to New Life	1
Operation Breakthrough	3
ReDiscover	19
Sheffield Place	8
University Health Behavioral Health	2



"I was on the waitlist for a year and a half. I relapsed when I ran out of rehab and transitional housing options. Amethyst Place calling me is the reason I got clean for good. They called me right in the nick of time. I was at my wit's end and honestly thought I was going to die, but also, I was ready to die. I had lost all hope. Thank God that's not my story today."

Since moving in with her two daughters in September 2022, Whitney has built a loving and stable home life for her family. She also completed ReDiscover's treatment program and the Missouri Works Initiative Apprentice Ready Program. She now works as a Laborer Apprentice for Rau Construction. In this role, she is literally building her future home through the Amethyst Place housing expansion project, along with a viable career inspiring other moms.

WHITNEY'S STORY



AP
WAITLIST



LEVEL I:
STABILIZATION



LEVEL II:
EMPOWERMENT



LEVEL III:
SUSTAINABILITY



COMMUNITY
IMPACT (SROI)

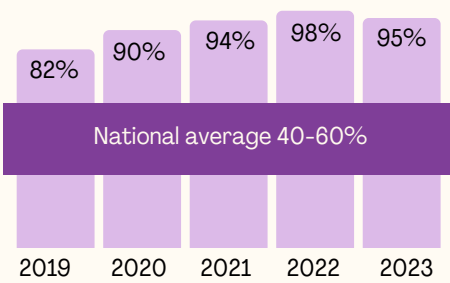
FINDING SAFETY AND STABILITY

After spending significant time on our waitlist, families who move into Amethyst Place become part of Level I (Stabilization) programming. During this phase, families benefit from stability, a sense of security, and the start of relationship restoration through reunification, a fully furnished private apartment, and mental health and recovery support. Programming allows residents to resolve circumstances that would inhibit their future success, including past evictions, outstanding legal issues, and lack of rental and employment history.

DEFYING NATIONAL AVERAGES

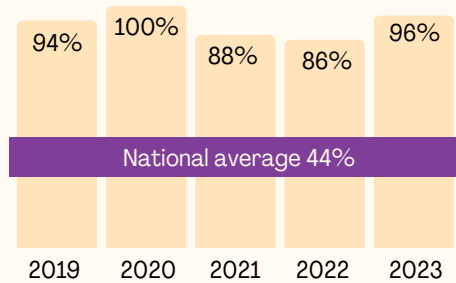
Amethyst Place’s holistic approach to stabilizing families has created a powerful impact over the last five years, especially when compared to national averages for recovery, family reunification, and housing stability.

Substance Use Recovery



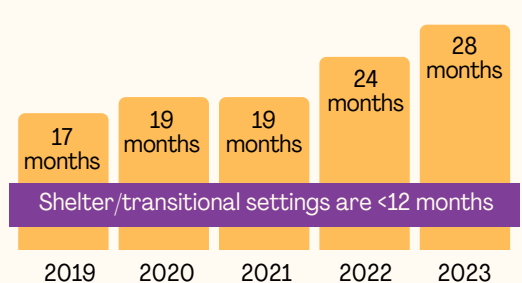
In comparison, the average recovery rate for the US population is between 40 to 60%.⁽²⁾ Our success is supported by the sense of connection on our campus, the lived expertise of our peer staff, and the multitude of recovery pathways supported.

Family Reunification



Nationally, only 44% of families reunify following mom's substance use treatment.⁽³⁾ Often times, this is due to a lack of safe housing options, court advocacy from service providers, and wraparound services that support the reunification process. Amethyst Place provides all of these services.

Housing Stability



Most recovery and transitional housing programs have a time-limited length of stay ranging from 30 days to 1 year. Our model has no time limits, allowing families the opportunity to individualize their journeys and move to independent housing when they are truly ready.

“When I made it to Amethyst, oh my God, it was mind-blowing...the sisters, the staff. I ain’t never felt a love like that, a sisterhood like that.”

Pauline moved into Amethyst Place just before Christmas in 2022. Since then, she reunified with her daughter Donairia, graduated Jackson County Family Treatment Court, and was the keynote speaker for the Amethyst Place graduation. In addition to her full-time job at a daycare, Pauline hopes to use her powerful testimony and captivating presence to launch a motivational speaking career. She is also working hard to pour into her own daughter’s self-worth.

“I am striving to raise a great woman. I invest in her because she is my lifeline, and I love her with everything in me.”



PAULINE’S STORY



AP
WAITLIST



LEVEL I:
STABILIZATION



LEVEL II:
EMPOWERMENT



LEVEL III:
SUSTAINABILITY



COMMUNITY
IMPACT (SROI)

EMPOWERING THE WHOLE FAMILY

Next, families progress to Level II (Empowerment). With more stability, families are able to pursue their education and career goals while maintaining their mental health and recovery stability. For many, this includes becoming a first-generation college student, completing vocational training, starting a meaningful career pathway, and improving financial security. During this time, children are able to thrive at home and in school, enjoying their newfound stability, making neighborhood friends, continuing therapy as needed, participating in Youth Empowerment Programming (YEP!), and cheering mom along on her inspirational journey.

"I now have a car, permit, and tags, thanks to Amethyst Place's direct assistance program. Having reliable transportation is necessary for me and my daughter."

This achievement seemed far from reach when Sam and her daughter Uriah moved to Amethyst Place in November 2021. She was too overwhelmed with paying off old utility bills and probationary and court costs. Yet, without a car, her future was limited. That's where Amethyst Place came in to bridge the gap. After coaching and financial assistance through our financial empowerment program, Sam has her sights set on even bigger accomplishments.

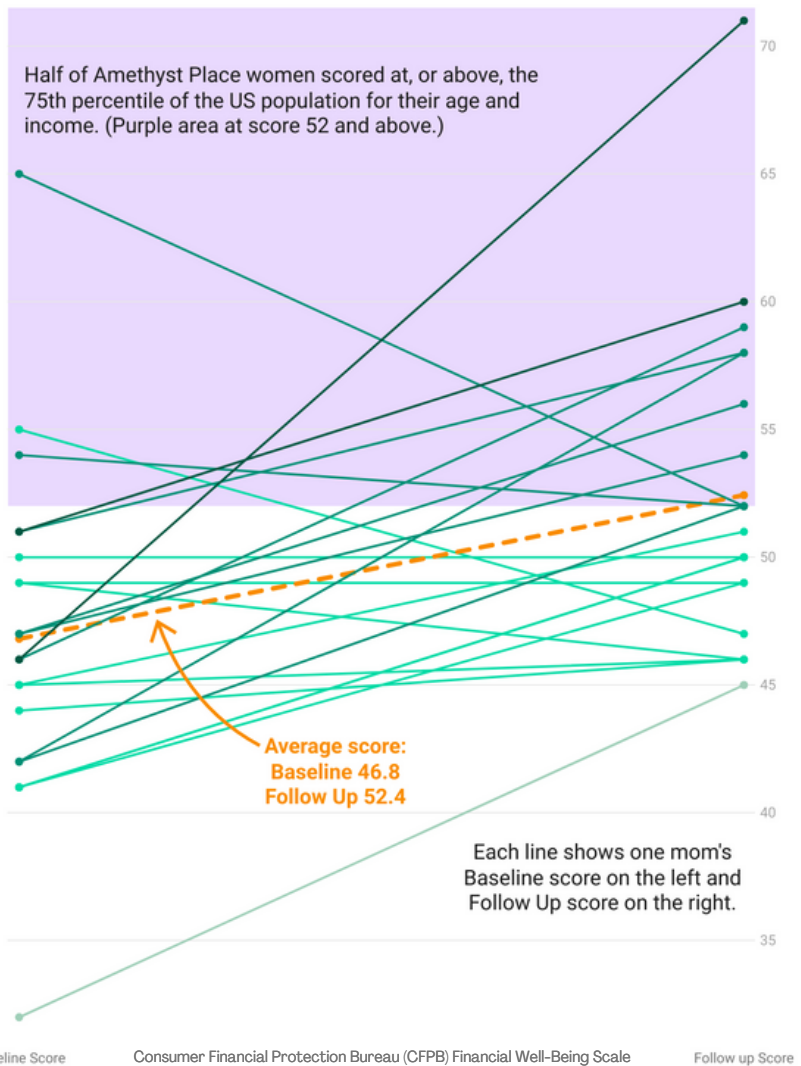
"In two years, I'd like to move out of Amethyst and be able to get a different car. My long-term goal is to be able to purchase a home, one that has a large enough yard for Uriah to play in."



SAM'S STORY

Amethyst Place Moms Improve Financial Well-Being

Scores on financial well-being self-assessment. Baseline score on the left and Follow Up score on the right.



Financial well-being is the extent to which a person has financial security and financial freedom of choice, regardless of income level. As shown above, Amethyst Place women significantly increased their financial well-being after one year of individual financial coaching and group programming. The average Amethyst Place family performed better than 75% of the US population in their income category. This suggests healthier financial beliefs and practices as families work to stretch their current income and ultimately increase it through vocational and educational pathways.



AP
WAITLIST



LEVEL I:
STABILIZATION



LEVEL II:
EMPOWERMENT



LEVEL III:
SUSTAINABILITY

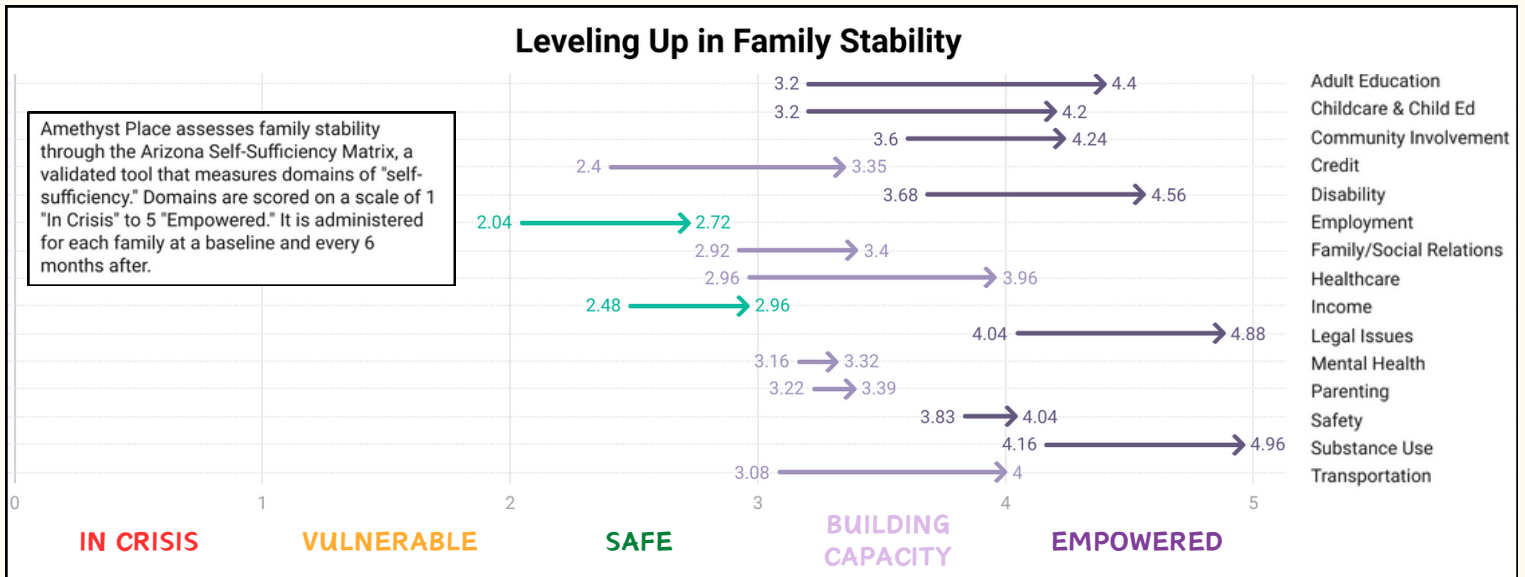


COMMUNITY
IMPACT (SROI)

SUSTAINING SUCCESS AFTER AMETHYST PLACE

Currently, Level II (Empowerment) is where our program ends and residents move out into the community after about two years. But the journey doesn't have to stop here. Through our expansion plans, we will add a new Level III (Sustainability). This will allow residents to continue in affordable housing with more independence in a family-friendly townhome, while having a built-in support system to easily engage when needed. We hope to see even higher rates of degree completion, upward mobility in career paths, and better long-term outcomes. As it stands, with an average stay just under 3 years, families already achieve a high level of stability upon graduation.

The chart below demonstrates the holistic family stability improvements that Amethyst Place families experience in our program, from advancing adult and child education to resolving legal issues. By the time they graduate, they score in the highest possible range (Empowered) in nearly half of the 18 domains.



Ashley is a mom of three, college student, educator, and proud Amethyst Place graduate. Her life today is much different than when her family entered Amethyst Place in 2022.

Despite having over \$20,000 in legal debt, she worked tirelessly with the support of staff to nearly pay it off. Now, just her student loans for her bachelor's degree remain, supporting her dream of becoming a teacher. Through sheer determination, patience, and the unwavering support of Amethyst Place, Ashley isn't just surviving; she's steering her own ship toward a brighter, more prosperous future.

"Once I get my degree and join the teacher's union, I'd like to become a homeowner."



ASHLEY'S STORY

Ashley's name and photo have been changed at her request to protect her anonymity. Unfortunately, stigma toward people in substance use recovery is still a barrier in many professional fields.



AP
WAITLIST



LEVEL I:
STABILIZATION



LEVEL II:
EMPOWERMENT



LEVEL III:
SUSTAINABILITY



COMMUNITY
IMPACT (SROI)

OUR SOCIAL RETURN ON INVESTMENT (SROI)

It costs our community more to do nothing than it does to fund a program like Amethyst Place. Lost potential, lost hope, and lost futures, combined with the cost of treating the consequences of inaction, including incarceration, foster care placement, and healthcare costs, make it clear that we cannot afford to do nothing.

Amethyst Place produces outcomes that will transform future generations. Investing in our program offsets other costs, such as:

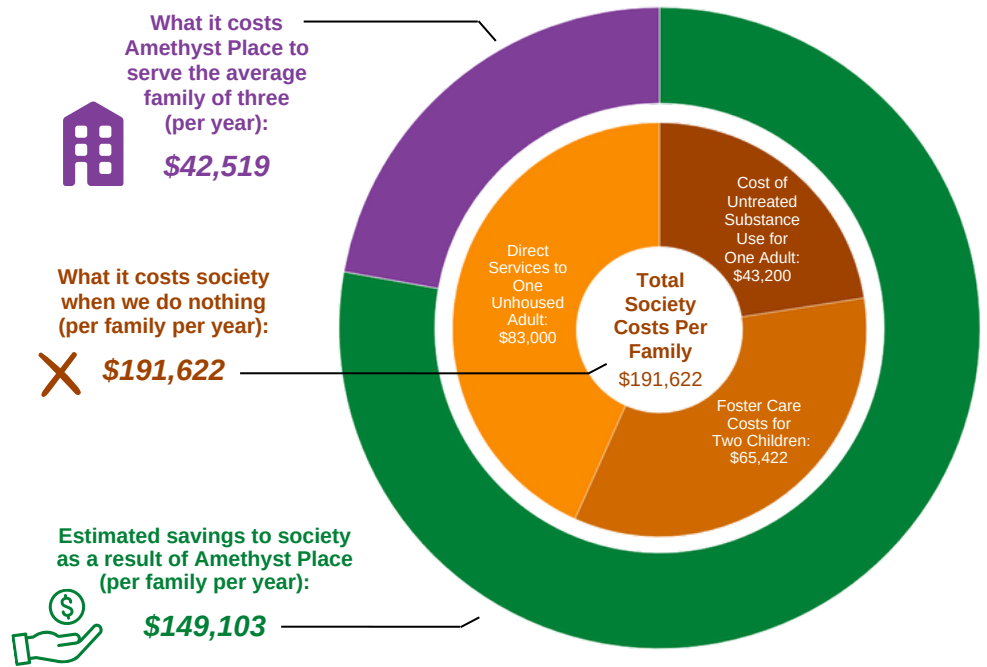
- Foster care placement: \$32,711 per child annually ⁽⁴⁾
- System costs for untreated substance use disorder: \$43,200 per person annually ⁽⁵⁾
- Direct services to people who are unhoused: \$83,000 per person annually ⁽⁶⁾

For each family served, we could save an estimated \$149,103 annually.

Beyond financial savings, we can also save lives and restore futures through our two-generational approach, which can have ripple effects across future generations.

Our Social Return on Investment

Comparing the many community costs of families in crisis to the costs of living at Amethyst Place illustrates the tremendous savings possible. Compared to the costs to the community without Amethyst Place, our program provides an estimated savings of nearly \$150,000 per family.



GROWING OUR IMPACT

All families deserve the opportunity for growth. Yet, for every family that succeeds at Amethyst Place, there is another desperately hoping for the same chance. At any time, 50 families are waiting one year to call Amethyst Place home. Until then, they are trapped in survival mode - constantly worrying about where to sleep, if they will ever reunify, and how to maintain hope.

That's why we launched #GrowAP. By the end of 2024, we will open 32 more units of housing, bringing our campus total to 70. That means we will nearly double our SROI, benefiting over 300 women and children annually.



BY THE NUMBERS

25

apartments

7

townhomes

100+

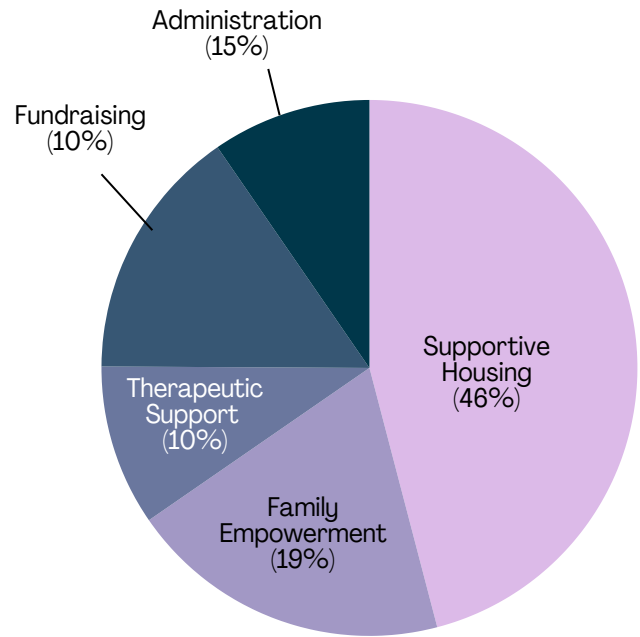
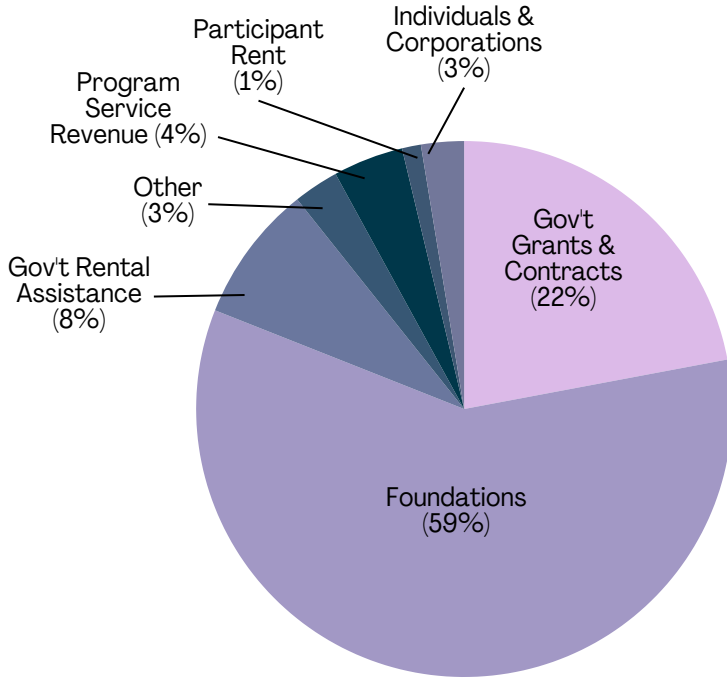
more women and children housed

FY23 FINANCIAL OVERVIEW

In FY23 (10/1/22 to 9/30/23), we focused on sustaining organizational operations and diversifying funding streams to prepare for expansion. We also began construction on the project over summer 2023, which is reflected in our revenues. Further financial details are available on our website, including audited financial statements and 990 forms (<https://amethystplace.org/finances/>).

REVENUES = \$6,577,638

EXPENSES = \$2,310,243



BY THE NUMBERS: 2023 WOMEN AND TEEN ACHIEVEMENTS

Supported by the financials above, Amethyst Place women and teens had remarkable achievements.

11

vocational certifications earned

8

Amethyst Place graduates

4

GEDs attained

1

master degree earned

1

first-time homeowner

treatment programs completed

9

families reunified

7

associate degrees earned

2

bachelor degree earned

1

business opened

1



JJ, age 14, started his own window washing business. Amethyst Place became his first client.



Esbeydi earned her GED through Literacy KC. She proudly displayed her Mexican heritage at graduation.

THE SUPPORTERS WHO MAKE TRANSFORMATION POSSIBLE

Amazon Smile
 Ascend Wealth Management
 Balocca-Clemens Family Foundation
 Bank of America
 Blessings Abound
 Blue Cross Blue Shield of Kansas City
 BlueScope Foundation
 Charles and Angela Sunderland Fund
 Children's Mercy Hospital
 Children's Services Fund of Jackson County
 City of Kansas City, MO
 Commerce Trust
 Community Action Agency of Greater Kansas City
 Country Club Christian Church
 Curry Family Foundation
 Ewing Marion Kauffman Foundation
 Francis Family Foundation
 Frank and Margaret McGee Fund
 George & Ada Ultch Memorial Fund
 Grapevine Designs
 Greater Kansas City Community Foundation
 Hallmark Corporate Foundation
 Health Forward Foundation
 Housing Authority of Kansas City, MO
 Hulston Family Foundation
 Ina Calkins Trust
 Jackson County Housing Resources Commission

Jackson County COMBAT
 Jacob L. & Ella C. Loose Foundation
 Jewish Community Foundation of Kansas City
 Joel & Judy Cerwick Foundation
 Judge Cleveland F. Moulton Christmas Poor Fund
 Kansas City Athenaeum
 Kansas City Junior Board
 The Kemper Family Foundations at UMB
 Kutak Rock LLP
 Ladies Ancient Order of Hibernians
 Lockton Companies
 Marion and Henry Bloch Family Foundation
 Missouri Department of Mental Health
 Missouri Department of Social Services
 Mullinix Family Foundation
 Munich Re Trading
 Network For Good
 Nicholson Meyer Capital Management
 Oppenstein Brothers Foundation
 PayPal Giving Fund
 Pfriem Family Fund
 Precision Printing
 Recovering Women Riders Chapter 7
 Robertson Family Foundation

RW Farmer Construction Company
 Sarli Family Foundation
 SkillBuilders Fund
 Skincare by Shannon Smith
 Tella Naluri Foundation
 The Dehaemers Family Charitable Trust
 The Kirk of Kansas City
 The Little Gym of Kansas City North-Parkville, MO
 The Mariner Foundation Fund, a Donor-Advised Fund of the Signatry
 The Robert E. & Polly A. Zimmerman Foundation
 Theta Phi Alpha at Rockhurst University
 Travois
 UMB Bank
 United Way of Greater Kansas City
 University Health Behavioral Health
 Victor E. Speas Foundation
 WellSky Foundation
 Women's Sports Foundation
 William T. Kemper II Charitable Trust

Individual donors were not listed to maintain privacy. The selfless investment by countless individuals fuels the Noble Cause of Amethyst Place and creates brighter futures for hundreds of Kansas City families.



OUR LEADERSHIP

BOARD OF DIRECTORS

- **Brooke Runnion**, Board Chair, Lockton Companies
- **Jaimie Davis**, Board Vice-Chair, Operation Breakthrough/Alumni
- **Vladimir Sainte**, Board Secretary, University Health Behavioral Health
- **Sara Beth Burton**, Treasurer, Chair of Finance Committee, Hallmark
- **Lauren Allen**, Housing Authority of Kansas City, MO
- **Liz Bean**, REVILLO: A Liz A. Bean Salon/Alumni
- **Randy Bennett**, Rawhide Harley Davidson Olathe
- **Yvonne Brewington**, Research Medical Center
- **Kathryn Evans**, Rooted Strategy
- **Elizabeth Glynn**, Travois
- **Erica Handley**, Operation Breakthrough/Program Council
- **Anthony Johnson**, Industrial Accessories Company
- **Michele Kemp**, Community Volunteer
- **Rev. Catherine Stark-Corn**, Community Volunteer
- **Liz Tobin**, BlueScope
- **Barbara Anne Washington**, MO State Senator, District 9
- **Brittani Williams**, Jackson County Family Treatment Court/Program Council

STAFF

- **Starla Wulf Brennan**, Executive Director
- **Jamila Edwards**, Director of Clinical Services
- **Sarah Knopf-Amelung**, Director of Strategy & Growth
- **Shanda Moon**, Director of Administrative Operations
- **Ashley Brooks**, Youth Empowerment Coach
- **Lauren Clifton-Thompson**, Philanthropy & Communications Manager
- **Olivia Deeken**, Clinical Therapist
- **LaTonya Evans**, Supportive Housing & Childcare Assistant
- **Mollee Flores**, Wellness Empowerment Coach
- **Regina Green**, Supportive Housing Manager
- **Renee Harris**, Youth Empowerment Manager
- **Erin Hestand**, Adult Empowerment Manager
- **Jimmy Holmes**, Data Analytics & Grants Manager
- **Christina Hubbard**, Career Empowerment Coach
- **Carmen Johnson**, Supportive Housing Assistant
- **Kayla Jones**, Youth Empowerment Coach
- **Latrese Kabuya**, Child & Family Therapist
- **Lisa Smallwood**, Financial Accountant
- **Rasheedah Villareal**, Group Therapist
- **Tonille “Starr” Williams**, Housing Resources & Volunteer Coordinator

PROGRAM COUNCIL (REFERRAL PARTNERS)

- **Christina Camacho-Gossage**, Imani House at Swope Health
- **Dr. Luis Cordoba and Mindy Manske**, Mattie Rhodes Center
- **Erica Handley**, Operation Breakthrough
- **Janice Kerby**, Children’s Mercy TIES
- **Regina McKinney**, Sheffield Place
- **Lavena Ogletree**, University Health Behavioral Health
- **Genesis Rivera**, Heartland Center for Behavioral Change
- **Susie Roling and Julia Lloyd**, Journey to New Life
- **Brittany Schwindt and Jenny Duncan**, Comprehensive Mental Health Services
- **Annthia Teague**, ReDiscover
- **Brittani Williams**, Jackson County Family Treatment Court

OUR VOICE RESIDENTS’ COUNCIL

Aime T., Amapola G., Andrea S., Angela S., Angela W., Brittani W., Cheyenne L., Esbeydi V., Pauline G., Tara S., Whitney L.

YOUTH ADVISORY COUNCIL

Aaliyah, Autumn, Dallas, Donairia, Isaiah, John “JJ”, LaMya, Londyn, Luis, Maribella, Mark, Zoey

CITATION REFERENCES

1. MARC. (2023). *Assessing the Affordable Housing Gap*. Retrieved from <https://storymaps.arcgis.com/stories/4e1137ba32fc4add805280517f8e174c>
2. National Institute on Drug Abuse (NIDA). (2020). *Drugs, brains, and behavior: The science of addiction, treatment and recovery*. Retrieved from <https://nida.nih.gov/publications/drugs-brains-behavior-science-addiction/treatment-recovery>
3. Grella, C. E., Needell, B., Shi, Y., & Hser, Y. (2009). Do drug treatment services predict reunification outcomes of mothers and their children in child welfare? *Journal of Substance Abuse Treatment*, 36(3), 278-293. Retrieved from <https://www.ncbi.nlm.nih.gov/pmc/articles/PMC2848488/>
4. Nielsen et al. (2019). *The unseen costs of foster care: A social return on investment study*. Retrieved from <http://www.thetcj.org/wp-content/uploads/2019/10/Alia-unseen-costs-of-FC.pdf>
5. Health Policy Institute, Georgetown University. (2022). *Substance abuse: Facing the costs*. Retrieved from <https://hpi.georgetown.edu/abuse/#:~:text=Substance>
6. Cohen, E. (2022). "The effect of housing first programs on future homelessness and socioeconomic outcomes." *KC Fed Research Working Papers*, 22-03. <http://doi.org/10.18651/RWP2022-03>

*Data visualizations created with Datawrapper.

CHECK OUT OUR COMMUNITY-CENTRIC EVENTS

UPCOMING EVENTS

Through our events, you'll get connected with the Amethyst Place community, learn more about our noble cause, and create generational impact for women and children in recovery.

And of course, you'll have lots of fun too!

We are committed to living out the principles of diversity, equity, inclusion, belonging, and accessibility.

That's why all of our upcoming events are free and non-alcoholic.

By eliminating financial barriers and alcohol consumption, we hope to build community that reflects our values and creates an accessible and inclusive space for everyone.

We look forward to your participation and thank you for your continued support.

BRING 'EM HOME BASEBALL BENEFIT



Saturday, June 8, 2024 / 11a-3p / Kansas City MLB Urban Youth Academy

Swing by and step up to the plate! The 3rd annual Bring 'Em Home event is back. The bases are loaded...at any given time, 50 families wait a year or more to call Amethyst Place home. That's why we're doubling our capacity to address the community need. Join us for a fun afternoon of raising awareness. We'll have tee-ball, yard games, food and drinks, a community resource fair, music, partnerships with 18th & Vine businesses, and so much more!

TUNES ON TROOST



Friday, July 26, 2024 / 5-8p / Amethyst Place

Come experience our version of an open house! You'll learn more about the transformative work of Amethyst Place while enjoying live music, gaming, yummy treats, and creative play. Mark your calendar and bring your loved ones for an unforgettable evening of joy and connection.

Visit amethystplace.org/events to learn more

GROWING GENERATIONS GRADUATION



Saturday, September 28, 2024 / 2-5p / Plexpod - Westport

September is National Recovery Month, a time where we celebrate our community and raise awareness to shatter stigma. Despite insurmountable odds, Amethyst Place families achieve incredible milestones like reuniting with their families, earning certifications and degrees, becoming homeowners, and much more! Save the date and join us in honoring Amethyst Place moms and teens as we recognize their many accomplishments at this community celebration.

Companies that Care

BUSINESS PARTNERSHIP PROGRAM



GOOD FOR COMMUNITY



GOOD FOR BUSINESS

LET'S PARTNER TO SUPPORT THE COMMUNITY AND YOUR BUSINESS!

We believe in the power of partnership! As we turn our focus to expanding our campus and services, we have pivoted from the traditional annual gala and sponsorship model. We believe in collaboration and long-term strategies to foster deeper relationships and strengthen our collective impact. Now more than ever, your customers and employees care about corporate social responsibility too. In addition to driving consumer decisions, 83% of millennial employees are more loyal to a company that helps them contribute to social and environmental issues (Source: [Forbes](#)).

Through volunteerism, donation drives, awareness campaigns, speaking engagements, financial contributions and more, you can make a deep impact while receiving partner benefits, media and brand recognition among other beneficial opportunities.

Let's work together to find the right social impact strategy for your business!

GIVING BACK IS GOOD FOR BUSINESS

Research shows that a company's charitable giving affects three-quarters (73%) of Americans' purchase decisions.



Source: [Mintel Cause Marketing US Report](#)

PARTNER SPOTLIGHT



Robbyn Mitchell (center) was the first-ever Companies that Care partner. As owner of **The Little Gym of Kansas City North - Parkville, MO**, she has organized multiple donation drives and hosted pop-up gyms for AP families to enjoy. The Mitchell family also has a secondary business in real estate, providing AP families with rental connections when they're ready to live independently.

HOW DOES IT WORK?

Companies that Care is a completely customizable partnership. Our goal is to curate a social impact strategy that benefits your business while supporting the Amethyst Place community. Check out potential ways that your business can benefit while giving back.

GOOD FOR BUSINESS



- Positive brand recognition and cross-promotion
- Access new markets
- Recruit and retain socially conscious employees
- Increase brand loyalty
- Enhance your social footprint and achieve philanthropic goals



GOOD FOR COMMUNITY

- Financial contributions
- Volunteerism
- Donation drives
- Employee awareness-building
- Customer awareness-building
- Employ AP families
- Participate in AP events
- Increase community engagement

SCHEDULE A STRATEGY SESSION

Lauren Clifton-Thompson, Philanthropy & Communications Manager
P: 816-200-0384 E: lauren@amethystplace.org

CONNECT WITH US

Office

2735-A Troost Ave.
Kansas City, MO 64109

Phone

816-231-8782

To donate

Scan the QR code
or text **GROWAP**
to **44-321**



www.amethystplace.org



Amethyst Place
where families come home to heal